



**MALHERBEX™**  
PROPERTY GROUP



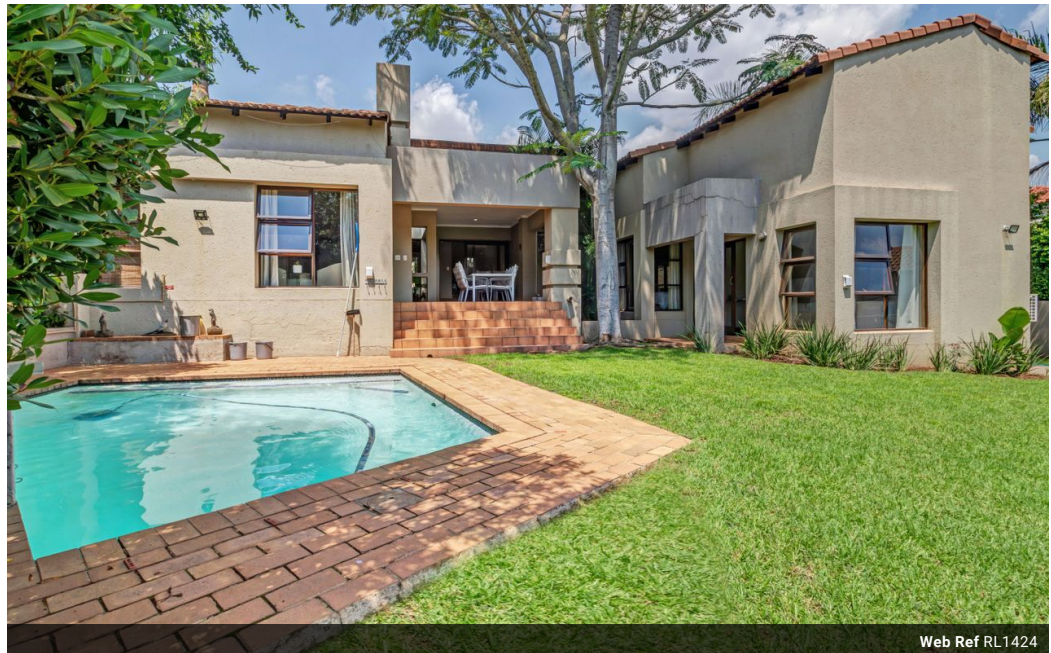
**Willie Malherbe**  
0834257174  
willie@malherbex.com

Contact Head Office

011 7869364

Unit 1 Cyrus House (Building 13) Mulberry Hill Office Park, Dainfern, Sandton, 2191

## 3 Bedroom Freehold For Sale in Dainfern Ridge Estate



Web Ref RL1424



R4,495,000

**Monthly Bond Repayment** R46,396.87

Calculated over 20 years at 11% with no deposit.

**Transfer Costs** R342,459.00 **Bond Costs** R57,265.00

These calculations are only a guide. Please ask your conveyancer for exact calculations.

**Monthly Levy** R2,990

3 2.5 2

### Charming Home in Secure Dainfern Ridge Estate - A Perfect Entry Opportunity

Discover the comfort and security of Dainfern Ridge with this inviting three bedroomed single story home, perfectly positioned on an 849sqm stand. Designed for both functionality and warmth, the home boasts a family room off the kitchen and formal lounge and dining area, separated by a dual gas fireplace leading to the patio and garden. The well-equipped kitchen includes a gas hob, generous pantry, and a handy study nook adjacent to the bedrooms, ideal for remote work.

Flooded with natural light, this residence offers three well-sized bedrooms, two bathrooms, and a convenient guest cloakroom. The main bedroom features an en-suite bathroom with direct access to the garden.

Step outside to a sun-drenched patio with a built-in braai, overlooking a beautifully large landscaped garden and sparkling swimming pool. Additional...

### Features

**Pets Allowed** Yes

#### Interior

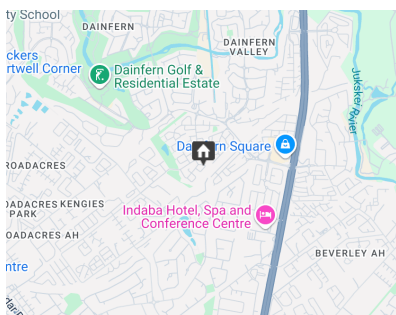
Bedrooms	3
Bathrooms	2.5
Kitchens	1
Recep. Rooms	3
Studies	1

#### Exterior

Garages	2
Security	Yes
Dom. Accom.	1
Pool	Yes

#### Sizes

Land Size	849m <sup>2</sup>
-----------	-------------------



<https://www.malherbex.com>